



## MARINE RADARS

# MR-1210RII

12.1-inch Color TFT, 4kW Radome Scanner

# MR-1210TII

12.1-inch Color TFT, 4kW Open Array Scanner (4 ft model)

# MR-1210TIII

12.1-inch Color TFT, 6kW Open Array Scanner (4 ft/6.5 ft models)



- 12.1-inch Large Color TFT Display (600×800 dots)
- 4kW Radome Radar (MR-1210RII), 4kW Open Array Scanner (MR-1210TII 4 ft model), 6kW Open Array Scanner (MR-1210TIII, 4 ft/6.5 ft models)
- True Trail Function \*1
- AIS Overlay Function\*2
- Simplified ATA Function
- New User Interface
- Optional Video Output Unit  
(\*1 External NMEA 0183 data and heading sensor required  
\*2 External AIS data required)





# Color Mar




**MR-1210R II** 4kW Output  
36NM Range



**MR-1210T II**  
(4 ft model) 4kW Output  
48NM Range



**MR-1210T III**  
(4 ft model) 6kW Output  
72NM Range

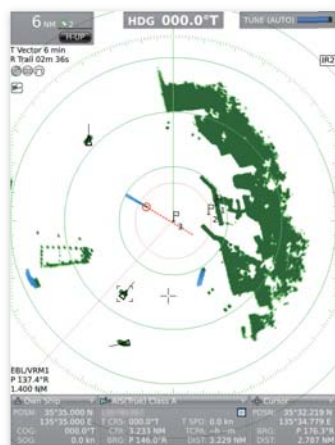


**MR-1210T III**  
(6.5 ft model) 6kW Output  
72NM Range

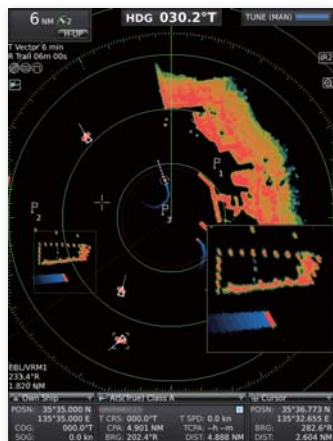
## MARINE RADARS MR-1210R II · MR-1210T II / T III

### 12.1-inch Color TFT Display (600x800 dots)

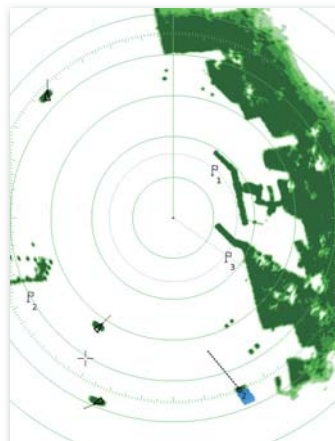
The 600cd/m<sup>2</sup> color TFT offers bright, vivid echoes with 32 steps gradient intensity. The display intensity and display color (day, night and user settings) can be instantly adjusted with the “BRILL” button. The full screen mode enlarges radar echoes to full size with transparent menus and operating information.



Day setting



Night setting



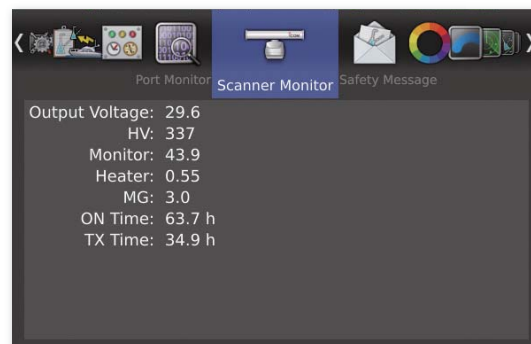
Full screen mode

### New User Interface

The MR-1210 provides consistent menu structure and the operator can configure various settings via visually intuitive operation. The language setting is selectable from English, Spanish, Vietnamese, Indonesian and Korean.



Color setting menu



Scanner monitor menu

# Line Radar with AIS Overlay Functions

## Stabilized Head Up Mode\*



When turning your own boat, the radar echo smoothly follows the boat movement without delay.

\*External heading sensor (NMEA 0183, N+1 or other formats) required.

## TLL (Target Latitude Longitude) Function\*



The MR-1210 can mark points with icons and transfer the position data with NMEA TLL sentences to other NMEA 0183 devices such as an external plotter.

\*External NMEA 0183 data and heading sensor required.

## True Trail Function\*



The true trail function cancels own ship movement and shows true moving objects with trails, while static objects are not trailed. The fine trail function allows you to select trail lines from normal, fine or extra fine trail.

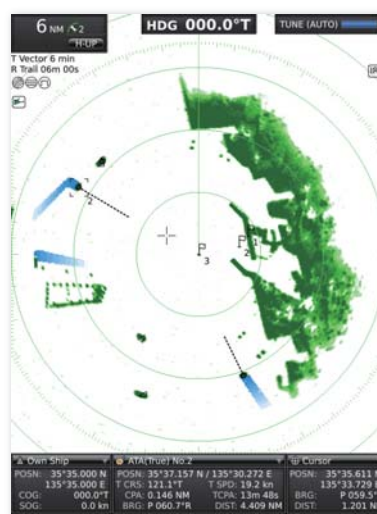
\*External NMEA 0183 data and heading sensor required.

## Simplified ATA (Automatic Tracking Aid)\*

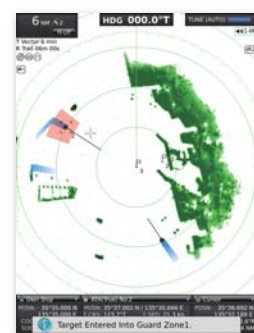


The simplified ATA function allows you to track up to 10 vessels with symbol icons. The CPA (Closest Point of Approach) and TCPA (Time to Closest Point of Approach) limits can be calculated and give an audible warning when any of the target vessels comes within the set range or time.

\*External NMEA 0183 data and heading sensor required.



Simplified ATA

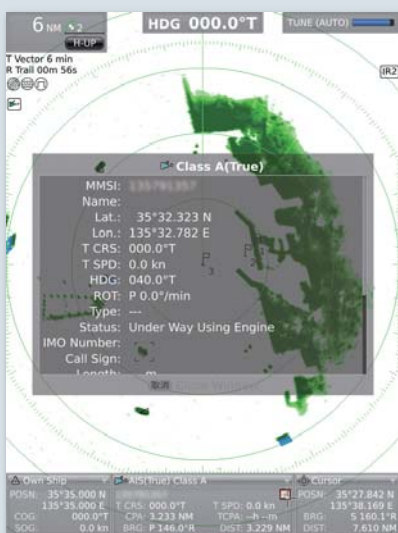


Guard zone alert example

## AIS (Automatic Identification System) overlay function\*



When connected to an external AIS receiver or AIS transponder, the MR-1210 overlays the received AIS information on the radar echo. You can see up to 100 AIS targets and check detailed information of the individual vessel such as speed, course, heading, vessel type and size.



Other vessel AIS information



Own vessel information



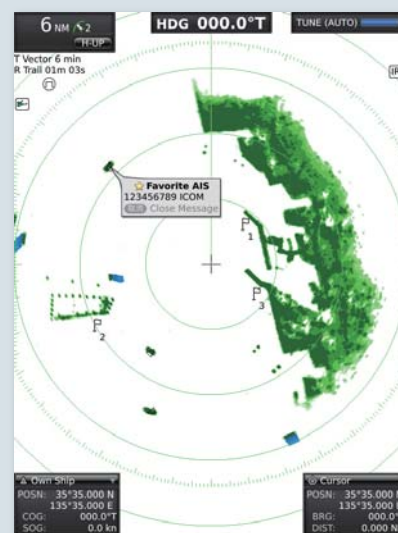
AIS list

## Favorite AIS\*



The favorite AIS function notifies you when a "friend boat" comes into a preset range. You can easily follow the movement of the boat position on the radar display. Up to three "friends boats" are programmable.

\*External AIS data required.



Favorite AIS



SPECIFICATIONS

DISPLAY UNIT	MR-1210RI	MR-1210TII (4 ft model)	MR-1210TIII (4 ft model)	MR-1210TIII (6.5 ft model)
Display type	12.1-inch TFT color LCD			
Resolution	600x800 dots			
Minimum range	25m (at 1/8 NM range)			
Maximum range	36NM	48NM	72NM	
Range scales (NM)	1/8, 1/4, 1/2, 3/4, 1, 1.5, 2, 3, 4, 6, 8, 12, 16, 24, 32, 36, 48*1, 64*2, 72*2 (*1 MR-1210TII/TIII only *2 MR-1210TIII only)			
Preheat time	90 seconds			
Power supply	10.2-42V DC			
Power consumption (at zero wind velocity)	60W (approx.)	70W (approx.)	80W (approx.)	90W (approx.)
Usable Temp. range	-15°C to +55°C			
Input data format	NMEA 0183, N+1, AUX, IEC61162-2			
Output data format	NMEA 0183			

SCANNER UNIT	MR-1210RI	MR-1210TII	MR-1210TIII
Scanner type	2 ft (60 cm) radome scanner	4 ft (120 cm) open array scanner	4 ft (120 cm) open array scanner 6.5 ft (200 cm) open array scanner
Rotation speed	24, 36rpm typ.	24, 36rpm typ.	22, 24, 36rpm typ.
Horizontal beamwidth	4°typ.	2°typ.	2°typ. 1.2°typ.
Vertical beamwidth	22°typ.	23°typ.	23°typ. 23°typ.
Side lobe	-22dB typ.	-24dB typ.	-24dB typ.
Usable Temp. range	-25°C to +70°C		
Usable humidity range	Less than 95% (at 40°C)		
Frequency	9410MHz ±30MHz		
Modulation	P0N		
Peak output power	4kW	4kW	6kW
Pulse-width/repetition rate	80nS/2160Hz, 80nS/1440Hz, 250nS/1440Hz, 350nS/1440Hz, 350nS/720Hz, 900nS/720Hz, 900nS/660Hz* (* MR-1210TIII only)		
Modulator	FET switching		
Intermediate frequency	60MHz		
IF bandwidth	10MHz, 3MHz		
Tuning	Auto/manual selectable		
Supplied system cable	15m; 49.2ft; OPC-2341	20m; 65.6ft; OPC-2342	

All stated specifications are subject to change without notice or obligation.

Applicable IP Rating

Ingress Protection Standard			
DISPLAY UNIT	IPX4	SCANNER UNIT	IPX6

OPTIONS

**SYSTEM CABLES**

**OPC-2339**  
20m (65.6ft) SYSTEM CABLE

**OPC-2340**  
30m (98.4ft) SYSTEM CABLE

**VIDEO OUTPUT UNIT**

**UX-234**  
Analog RGB output for external monitor

**CLASS B AIS TRANSPONDER**

**MA-500TR**

**AIS RECEIVER**

**MXA-5000**

Icom, Icom Inc. and the Icom logo are registered trademarks of Icom Incorporated (Japan) in Japan, the United States, the United Kingdom, Germany, France, Spain, Russia, Australia, New Zealand, and/or other countries.

Credits: This product includes "zlib/libevent/libusb" and "freetye" open source software, and is licensed according to the open source software license.

**Icom Inc.** 1-132, Kami-minami, Hirano-Ku, Osaka 547-0003, Japan Phone: +81 (06) 6793 5302 Fax: +81 (06) 6793 0013 [www.icom.co.jp/world](http://www.icom.co.jp/world) **Count on us!**

**Icom America Inc.**  
12421 Willows Road NE,  
Kirkland, WA 98034, U.S.A.  
Phone: +1 (425) 454-8155  
Fax: +1 (425) 454-1509  
E-mail: sales@icomamerica.com  
URL: <http://www.icomamerica.com>

**Icom (Europe) GmbH**  
Communication Equipment  
Auf der Krautweide 24  
65812 Bad Soden am Taunus, Germany  
Phone: +49 (6196) 76685-0  
Fax: +49 (6196) 76685-50  
E-mail: info@icomeurope.com  
URL: <http://www.icomeurope.com>

**Icom France s.a.s.**  
Zac de la Plaine,  
1 Rue Brindejonc des Moulinais, BP 45804,  
31505 Toulouse Cedex 5, France  
Phone: +33 (5) 61 36 03 03  
Fax: +33 (5) 61 36 03 00  
E-mail: icom@icom-france.com  
URL: <http://www.icom-france.com>

**Asia Icom Inc.**  
6F No. 68, Sec. 1 Cheng-Teh Road,  
Taipei, Taiwan, R.O.C.  
Phone: +886 (02) 2559 1899  
Fax: +886 (02) 2559 1874  
E-mail: sales@asia-icom.com  
URL: <http://www.asia-icom.com>

**Icom Canada**  
Glenwood Centre #150-6165  
Highway 17A, Delta, B.C.,  
V4K 5B8, Canada  
Phone: +1 (604) 952-4266  
Fax: +1 (604) 952-0090  
E-mail: info@icomcanada.com  
URL: <http://www.icomcanada.com>

**Icom Spain S.L.**  
Ctra. Rubi, No. 88 "Edificio Can Castanyer"  
Bajos A 08174, Sant Cugat del Valles,  
Barcelona, Spain  
Phone: +34 (93) 590 26 70  
Fax: +34 (93) 589 04 46  
E-mail: icom@icomspain.com  
URL: <http://www.icomspain.com>

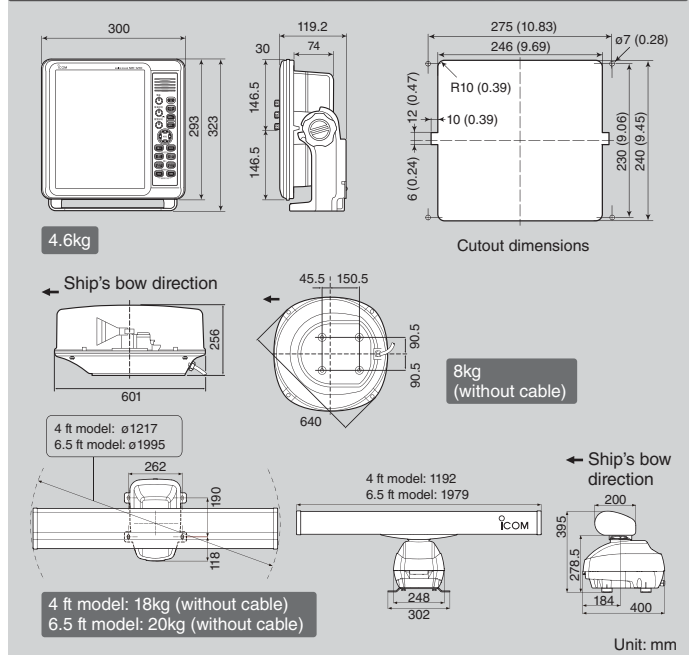
**Icom (Australia) Pty. Ltd.**  
Unit 1 / 103 Garden Road,  
Clayton, VIC 3168 Australia  
Phone: +61 (03) 9549 7500  
Fax: +61 (03) 9549 7505  
E-mail: sales@icom.net.au  
URL: <http://www.icom.net.au>

**Icom Brazil**  
Rua Ibororó, 444 Padre Eustáquio  
Belo Horizonte MG,  
CEP: 30720-450, Brazil  
Phone: +55 (31) 3592 8847  
Fax: +55 (31) 3592 8987  
E-mail: sales@icombrazil.com

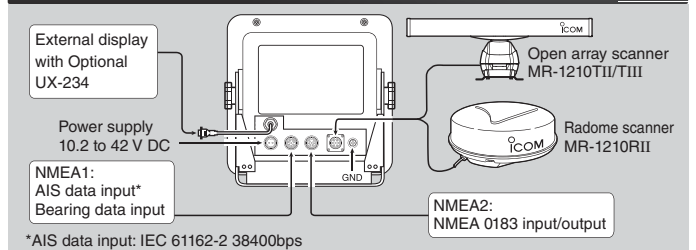
**Icom (UK) Ltd.**  
Blacksole House, Altira Park,  
Herne Bay, Kent, CT6 6GZ, U.K.  
Phone: +44 (0) 1227 741741  
Fax: +44 (0) 1227 741742  
E-mail: info@icomuk.co.uk  
URL: <http://www.icomuk.co.uk>

**Icom New Zealand**  
39C Rennie Drive, Airport Oaks,  
Auckland, New Zealand  
Phone: +64 (09) 274 4062  
Fax: +64 (09) 274 4708  
E-mail: inquiries@icom.co.nz  
URL: <http://www.icom.co.nz>

DIMENSIONS



REAR PANEL VIEW



Optional Video Output Unit

With an optional video output unit, UX-234, the MR-1210 can be connected to an external display. Same radar echoes can be observed on the main and secondary displays at the same time.



Your local distributor/dealer: